



Old Ford Road, London, , E2 9QD

£900,000

Elms Estates are Hugely Excited to be able to offer for Sale this Three Bedroom end of terrace Victorian House situated just moments from Victoria park and Regents canal.

Old Ford Road is within easy reach of Bethnal Green (central line) tube station with multiple bus routes in to the City, West End and beyond and additionally the glorious Victoria Park is within a short walk and offers beautiful open spaces and miles of scenic walks. The relaxed, cool feel of Victoria Park farmers market will make for wonderful lazy Sunday morning strolls and with Regents Canal also on your doorstep you will find endless new places to explore. This property really is set within the heart of the East End with easy access to all of the restaurants, bars, shops, markets, gyms, parks, galleries and museums this exciting area has on offer.

Internally the property is light and spacious throughout benefitting from two reception rooms, separate kitchen and bathroom all on the ground floor with access to the garden from the kitchen. On the first floor you have three double bedrooms.

Old Ford Road is offered to the market on a chain free basis and really does offer a unique and rare property purchase. An early internal inspection is highly recommended in order to avoid disappointment.



11'9" x 11'1" (3.6 x 3.4)

Dining Room

11'1" x 9'10" (3.4 x 3.0)

Kitchen

9'10" x 7'10" (3.0 x 2.4)

Bathroom

Bedroom One

15'8" x 11'5" (4.8 x 3.5)

Bedroom Two

11'5" x 10'9" (3.5 x 3.3)

Bedroom Three

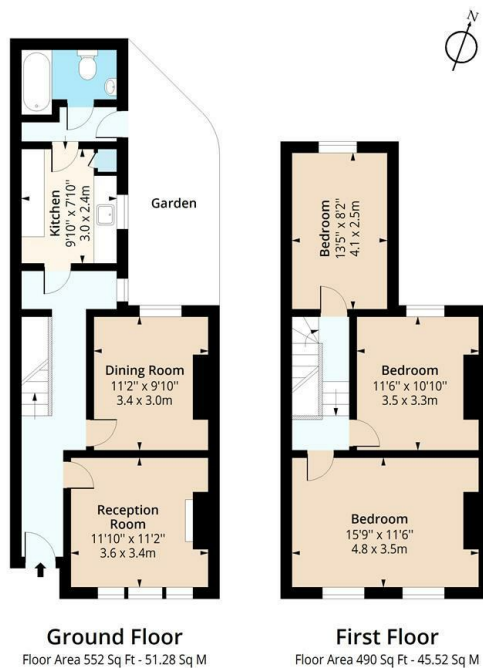
13'5" x 8'2" (4.1 x 2.5)

Garden

Material Information

Tenure: Freehold

Council Tax Band: E



Floor plan is for illustrative purposes only and is not to scale. Every attempt has been made to ensure the accuracy of the floor plan shown, however all measurements, fixtures, fittings and data shown are an approximate interpretation for illustrative purposes only.

